

## Elab Fluor® Violet 610 Anti-Human/Monkey CD11b Antibody[ICRF44]

Catalog Number: E-AB-F1146T

**Note:** Centrifuge before opening to ensure complete recovery of vial contents.

### Description

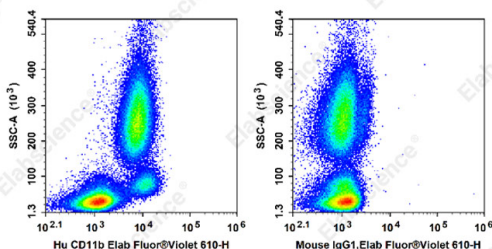
<b>Reactivity</b>	Human;Rhesus
<b>Host</b>	Mouse
<b>Isotype</b>	Mouse IgG1, κ
<b>Clone No.</b>	ICRF44
<b>Isotype Control</b>	Elab Fluor® Violet 610 Mouse IgG1, κ Isotype Control[MOPC-21] [Product E-AB-F09792T]
<b>Conjugation</b>	Elab Fluor® Violet 610
<b>Conjugation Information</b>	Elab Fluor® Violet 610 is designed to be excited by the violet laser (405 nm) and detected using an optical filter centered near 613 nm (e.g., a 615/20 nm bandpass filter).
<b>Storage Buffer</b>	Phosphate buffered solution, pH 7.2, containing 0.09% stabilizer.

### Applications

### Recommended usage

<b>FCM</b>	Each lot of this antibody is quality control tested by flow cytometric analysis. <b>The amount of the reagent is suggested to be used 5 μL of antibody per test (million cells in 100 μL staining volume or per 100 μL of whole blood).</b> Please check your vial before the experiment. Since applications vary, the appropriate dilutions must be determined for individual use.
------------	---

### Data



Staining of normal human peripheral blood cells with Elab Fluor® Violet 610 Anti-Human/Monkey CD11b Antibody[ICRF44](left) or Elab Fluor® 610 Mouse IgG1, κ Isotype Control (right). Cells in the leucocytes gate were used for analysis.

### Preparation & Storage

<b>Storage</b>	Keep as concentrated solution. This product can be stored at 2-8°C for 24 months. Please protected from prolonged exposure to light and do not freeze.
<b>Shipping</b>	Ice bag

### Antigen Information

<b>Alternate Names</b>	CD11 antigen-like family member B;CD11b;CR-3 alpha chain;Integrin alpha-M;Itgam; Leukocyte adhesion receptor MO1
------------------------	--

### For Research Use Only

**Uniprot ID**

P11215

**Gene ID**

3684

**Background**

CD11b is a 165-170 kD type I transmembrane glycoprotein also known as  $\alpha$ MIntegrin, Mac-1, CR3, and C3biR. CD11b non-covalently associates with integrin  $\beta$ 2(CD18) and is expressed on granulocytes, monocytes/macrophages, dendritic cells, NK cells, and subsets of T and B cells. CD11b/CD18 is critical for the transendothelial migration of monocytes and neutrophils. It is also involved in granulocyte adhesion, phagocytosis, and neutrophil activation. CD11b/CD18 interacts with ICAM-1 (CD54), ICAM-2 (CD102), ICAM-4, CD14, CD23, heparin, iC3b, fibrinogen, and factor X.